



Application Guide

Nymi Band™

For more information, please visit thinmanager.com

Nymi technology provides a wearable device that ThinManager can incorporate into a user workflow. The Nymi Band™ is associated with a specific user. There are three options available for ThinManager to work with a Nymi Band™.

1) Nymi Band™ RFID with ThinManager. This configuration manages users with ThinManager.

ThinManager can treat the Nymi Band™ the same way it treats an ID card used with a RFIdeas badge reader. This compares the assigned badge ID to the ThinManager authorized users, granting access to assigned content.

This option requires adding either the **RF Ideas pcProx Module**, the **RF Ideas pcProx USB Module** or the **USB ID Reader Module** to the selected terminal.

This configuration associates Nymi Band UID <string> with a ThinManager User to allow passage of credentials for the ThinManager User into the application e.g. Factory Talk View SE.

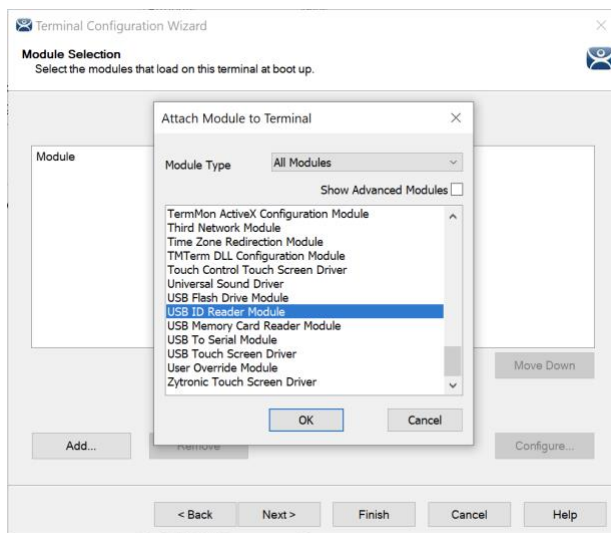
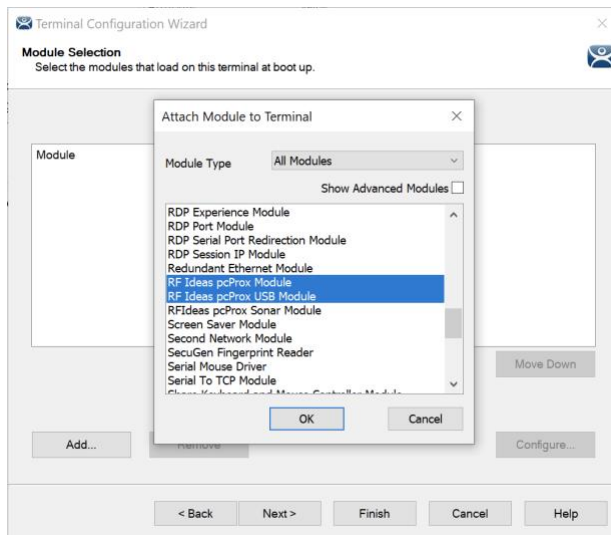
1

OR

2

OR

3



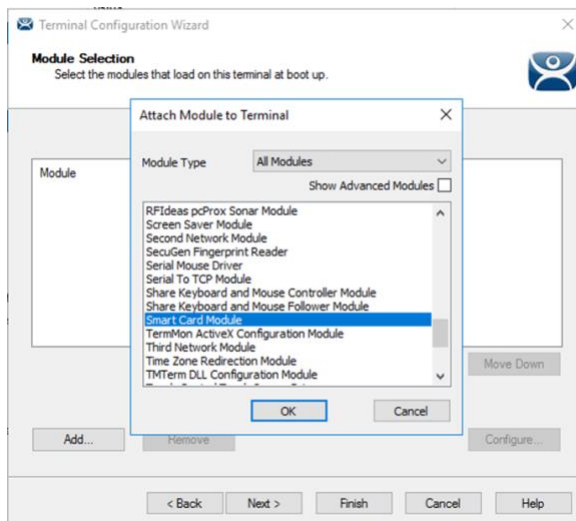
2) Nymi Band RFID as a Smart Card with ThinManager. This configuration manages users with Nymi Server.

This compares the assigned badge ID to the ThinManager authorized users, granting access to assigned content.

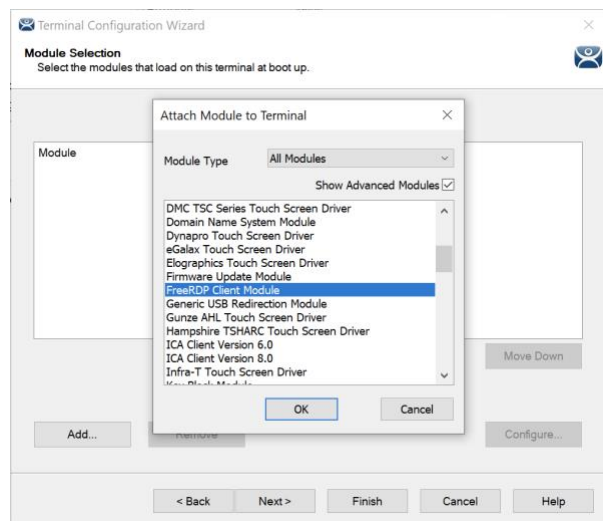
This option requires adding the ThinManager **FreeRDP Module** and the **Smart Card Module** to the selected terminal.

This configuration uses ThinManager to provide a conduit to the Nymi Environment. This is typically leveraged when a customer is using a ThinManager thin client for endpoints but deploying 3rd party remote session apps.

1



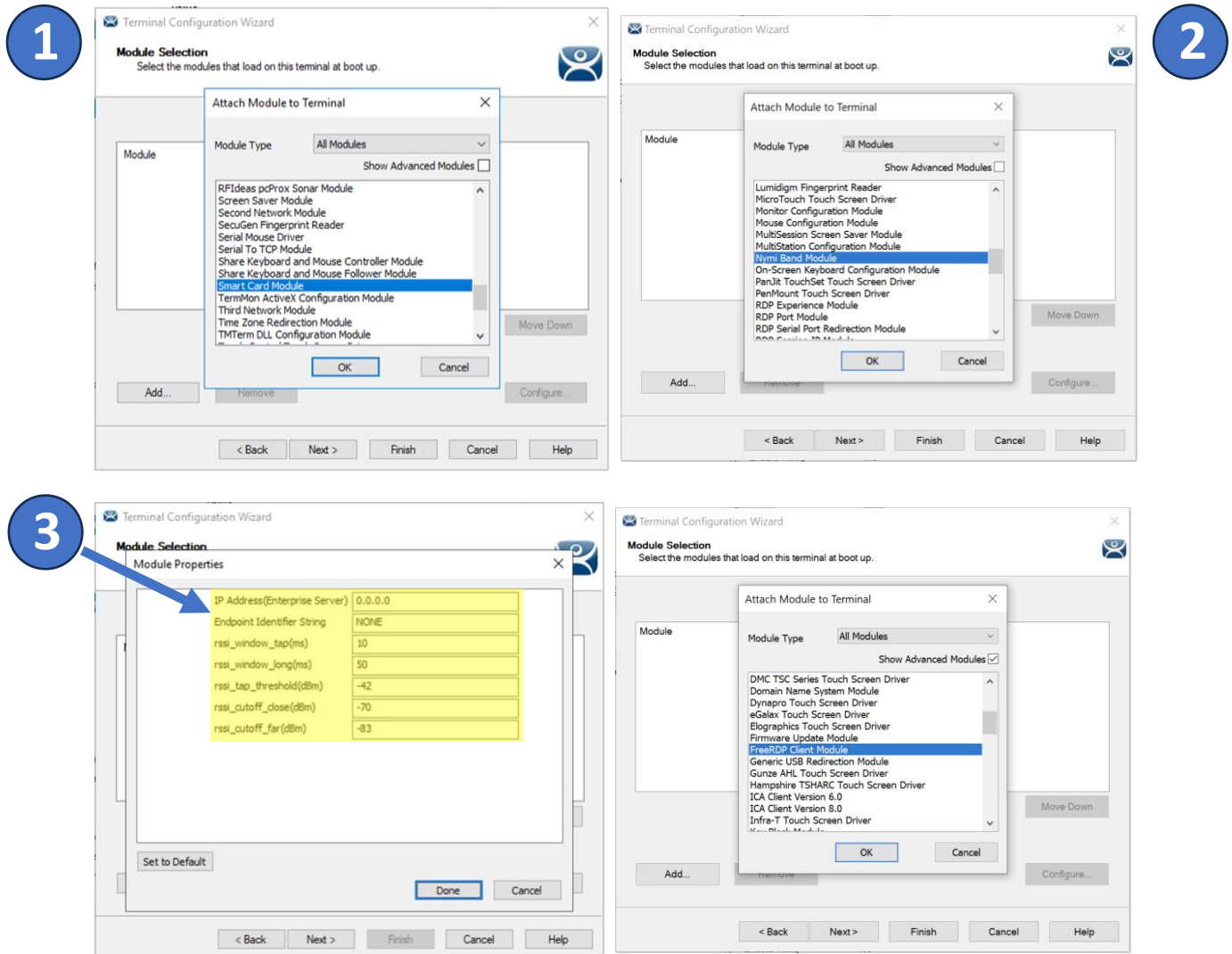
2



3) Nymi Band™ with Bluetooth. This configuration manages users with Nymi Server. It also requires a Bluetooth dongle from Nymi to manage proximity.

The ThinManager Nymi Band Module allows entry of the IP address that corresponds to a Nymi server as well as the entry of Bluetooth proximity settings.

This option requires adding the ThinManager **Smart Card Module**, **Nymi Band Module**, and the **FreeRDP Module** to the selected terminal.



Customers may need to enable the **Nymi Band Module** under the following circumstances:

- **If the customer intends to perform Nymi Band enrollments from a ThinManager Thin Client.**

Enrollment terminals require both a **BLE (Bluetooth Low Energy) dongle** and the **Nymi Band Module** to function correctly during the enrollment process.

- **If the customer plans to use Nymi Enabled Applications (NEA) that rely on BLE communication.**

This includes applications such as:

- **Evidian Wearable Mode**, which uses BLE for authentication workflows.
- **SDK-based integrations**, for example **Rockwell Automation PharmaSuite MES** or other solutions requiring BLE connectivity between the Nymi Band and the application.

Enabling the Nymi Band Module ensures that BLE-related functionalities—such as enrollment, authentication, and application communication—operate as expected.

Additional Reference:

For detailed configuration steps and guidance on BLE-related settings, please refer to the **NES/CWP Deployment Guide**:

(<https://support.nymi.com/hc/en-us/sections/360004058491-Release-Documentation>)



Appendix:

For supported **Nymi Band™** version information please visit

<https://partners.thinmanager.com/hardwares/99>.

For more information on supported **thin client hardware** please visit

<https://partners.thinmanager.com/terminals>.

For information on supported **peripheral hardware** please visit

<https://partners.thinmanager.com/hardwares>.

For customers who need to add a non-rfIDEAS NFC reader please visit

https://rockwellautomation.custhelp.com/app/answers/answer_view/a_id/1131581/loc/en_US

Some options utilize the Nymi server and require additional steps to configure the Nymi resources. For information on setting up and configuring a Nymi server, please refer to

<https://support.nymi.com/hc/en-us/sections/360004058491-Release-Documentation>

Connect with us.    

rockwellautomation.com — expanding **human possibility**[®]

AMERICAS: Rockwell Automation, 1201 South Second Street, Milwaukee, WI 53204-2496 USA, Tel: (1) 414.382.2000

EUROPE/MIDDLE EAST/AFRICA: Rockwell Automation NV, Pegasus Park, De Kleetlaan 12a, 1831 Diegem, Belgium, Tel: (32) 2663 0600

ASIA PACIFIC: Rockwell Automation SEA Pte Ltd, 2 Corporation Road, #04-05, Main Lobby, Corporation Place, Singapore 618494, Tel: (65) 6510 6608

UNITED KINGDOM: Rockwell Automation Ltd., Pitfield, Kiln Farm, Milton Keynes, MK11 3DR, United Kingdom, Tel: (44)(1908) 838-800

Rockwell Automation is a trademark of Rockwell Automation, Inc. Trademarks not belonging to Rockwell Automation are property of their respective companies.

Publication TM-AT002A-EN-P — February 2026
Copyright© 2026 Rockwell Automation, Inc. All rights reserved. Printed in USA.